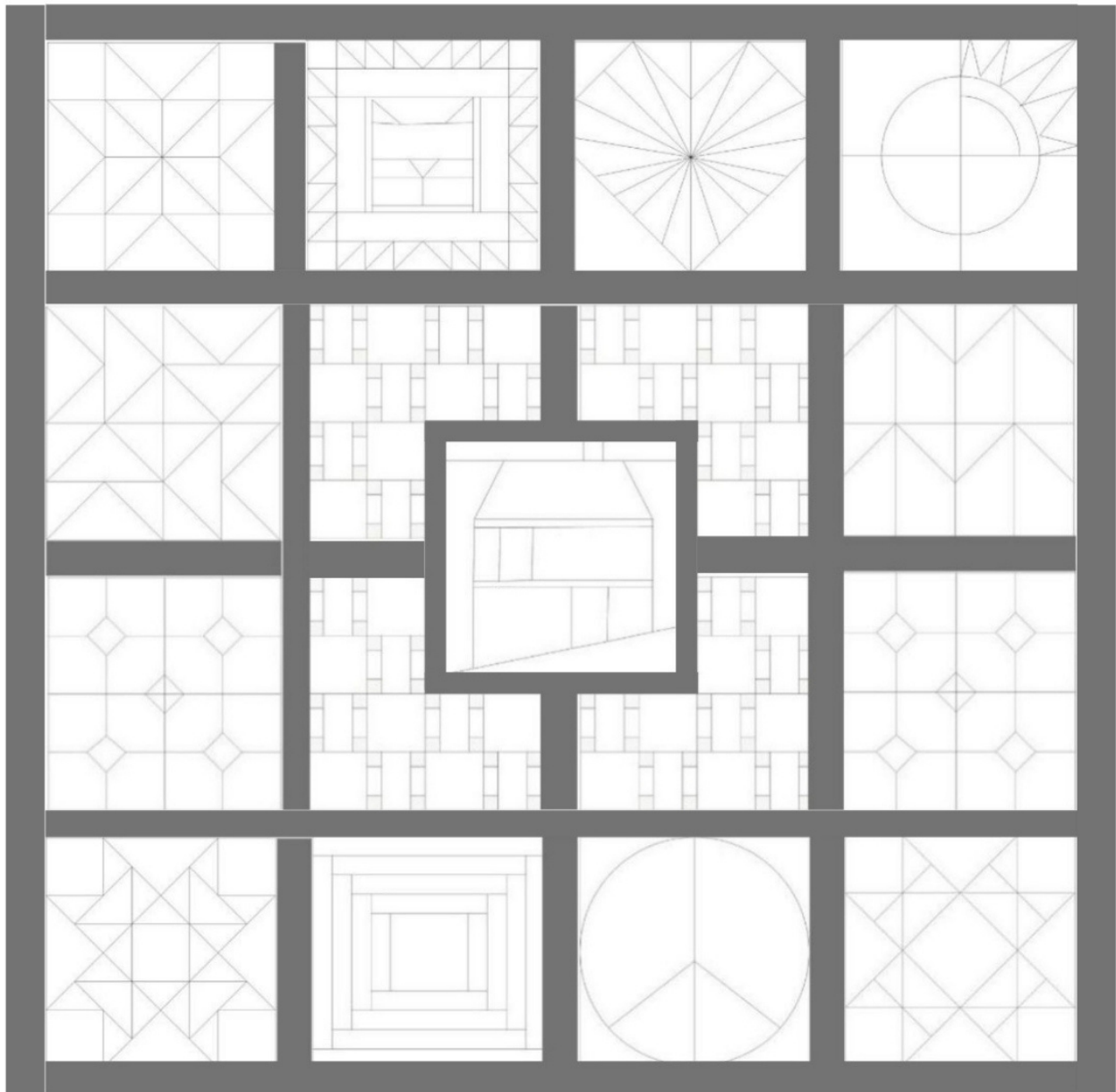


SEW GRATEFUL FOR A

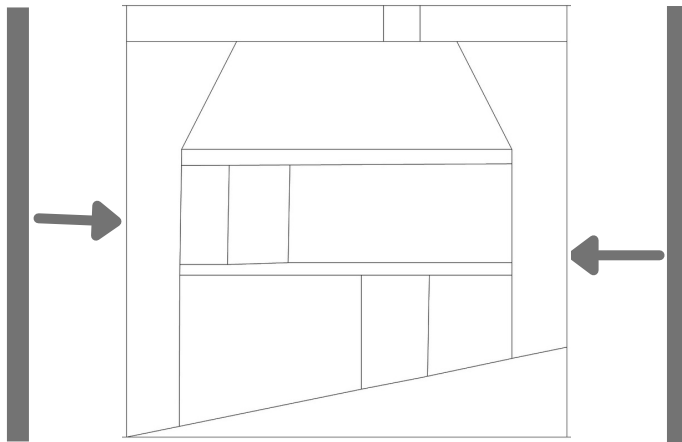
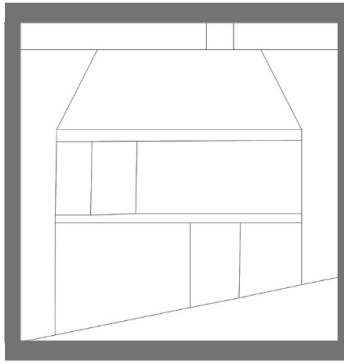
Home Surrounded by Positivity



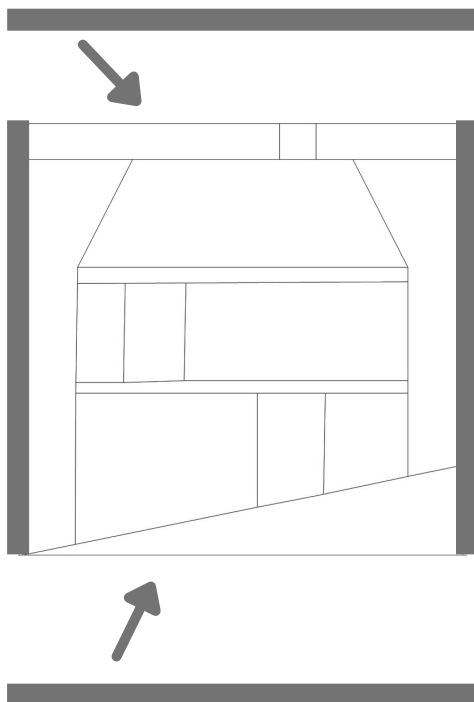
Note: Cut (14) 2.5" x width of fabric strips of sashing fabric

- set 2 strips aside for shorter sashings
 - sew 2 strips at right angles, rough-cut at 56" (not the final number)
- repeat 3 x for a total of 4 horizontal sashings/borders
- sew 2 strips at right angles rough-cut at 61" (not the final number)
- repeat for a total of 2 vertical outside long sashing/borders
- set all 6 aside and use cutoffs for smaller sashings

1" HOUSE BORDER

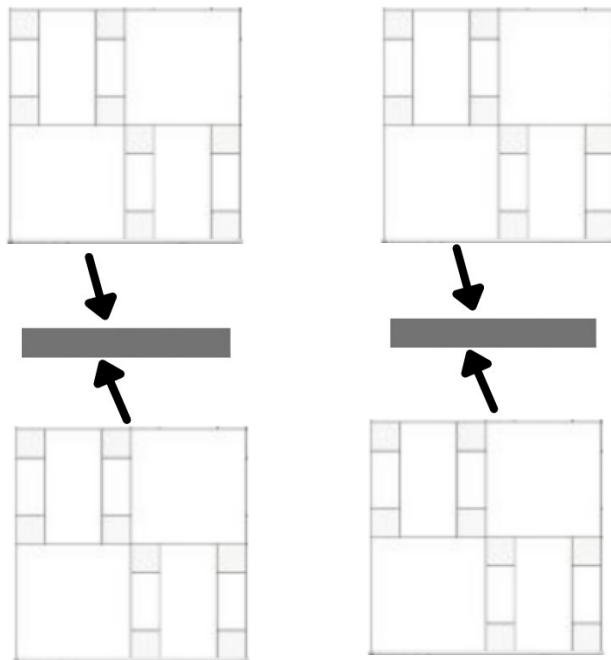
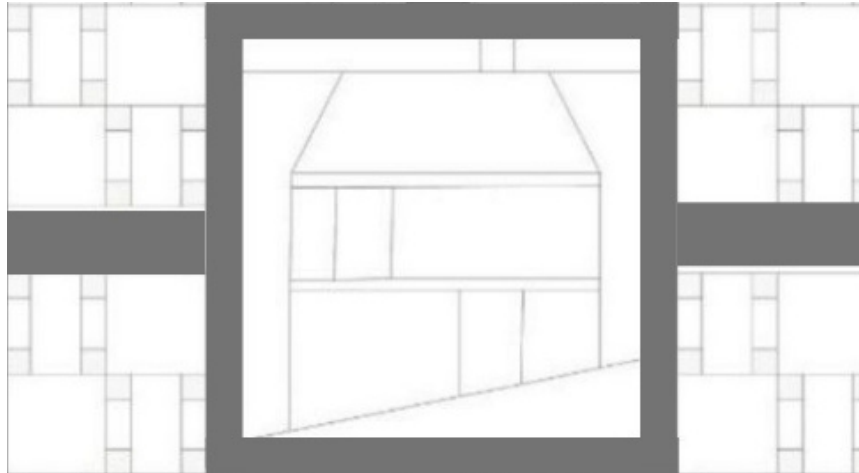


- Cut 2 pieces of sashing fabric each 1.5" wide x 12.5" long
- Sew to sides of House Block

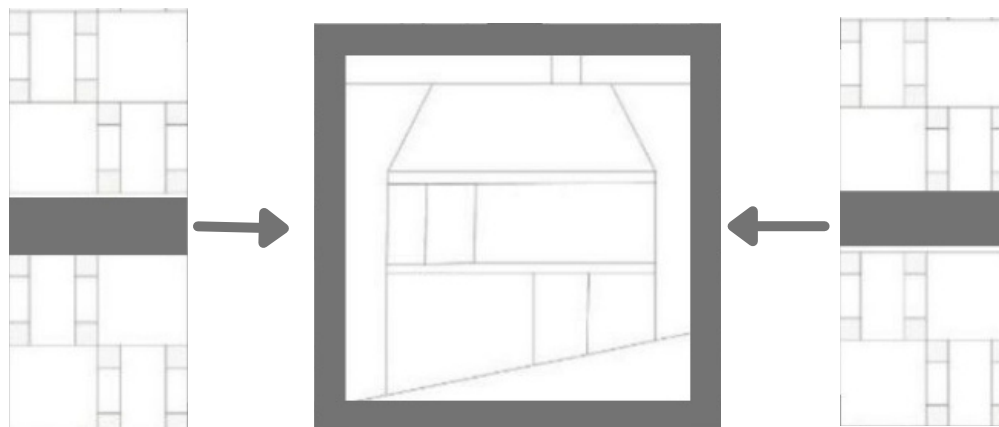


- Cut 2 pieces of sashing fabric each 1.5" x 14.5" long
- Sew to top & bottom of House

POSITIVITY ON HOUSE SIDES

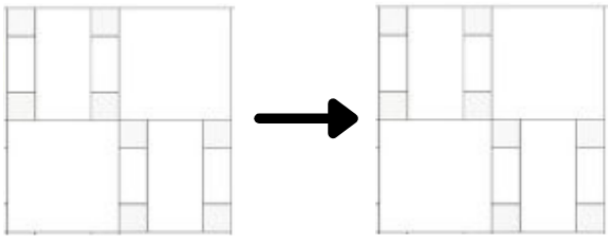


Cut (2) 2.5" x 6.5" strips of sashing and sew to side blocks as shown

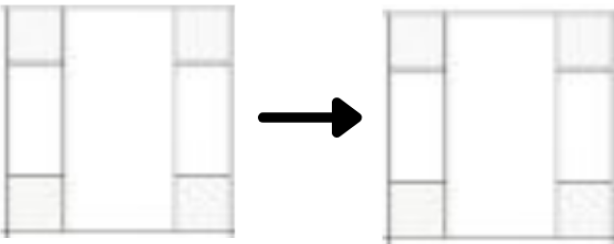


UPPER & LOWER POSITIVITY PANELS

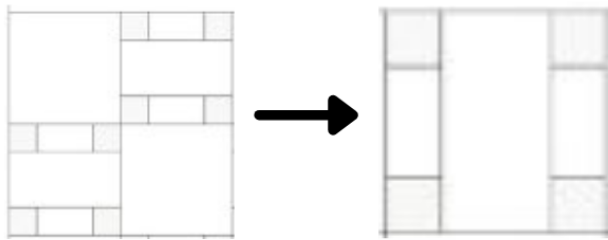
Create 2 Rows of Plus signs each 26.5" long



- first make 4 sets of 6.5 x 12.5 blocks by combining of 2 sets of plus signs:

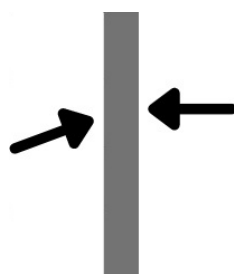
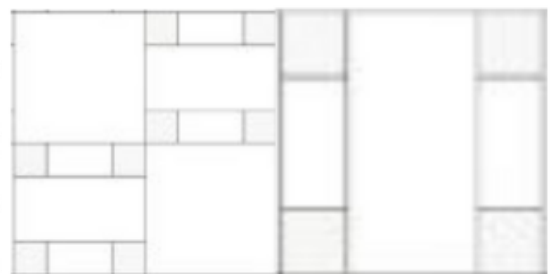
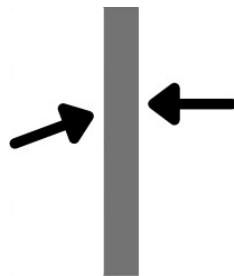


- attach (2) of 6.5" blocks
(made from 4 of the 3.5" plus signs)

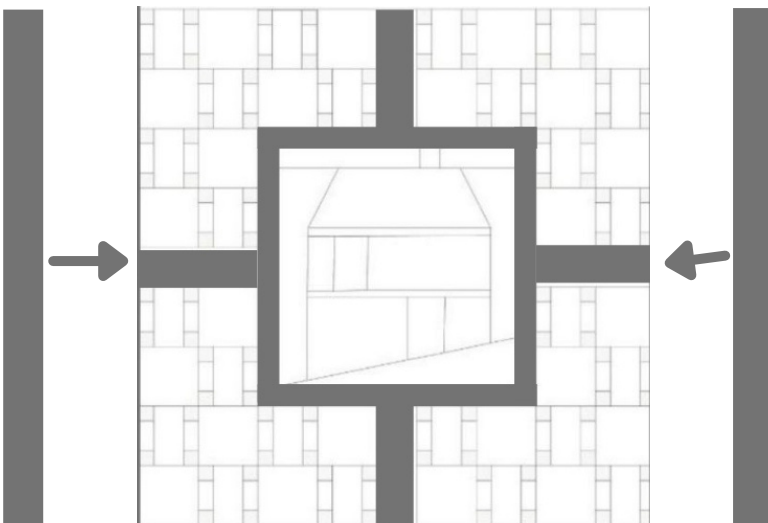
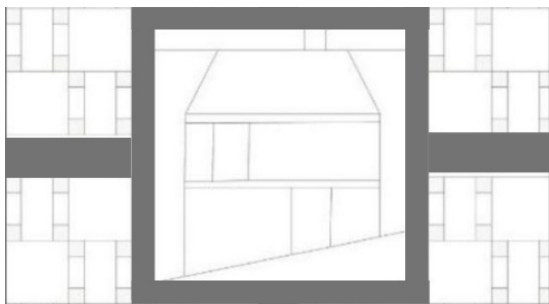
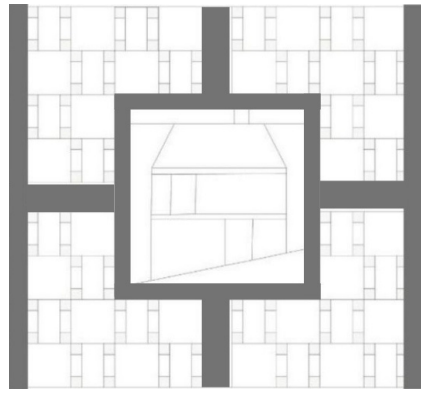


- or (2) 6.5" plus signs
- or a combination of both to make a 6.5 x 12.5" block

- cut 2 pieces of sashing fabric each 2.5" wide x 6'5" long
- attach 2 sets of 12.5 blocks with a piece of sashing to make 2 panels, each one will be 6.5" wide by 26.5" long



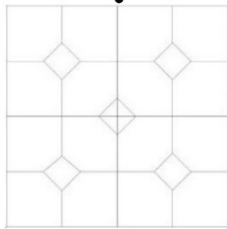
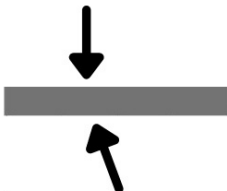
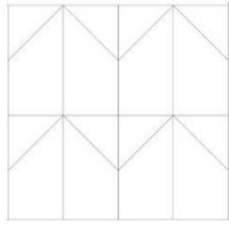
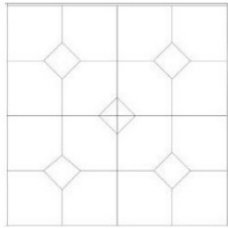
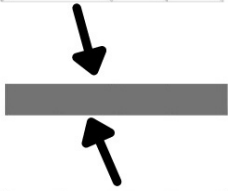
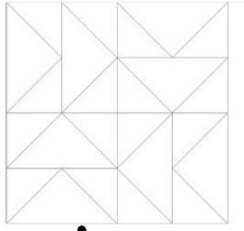
HOUSE CENTER



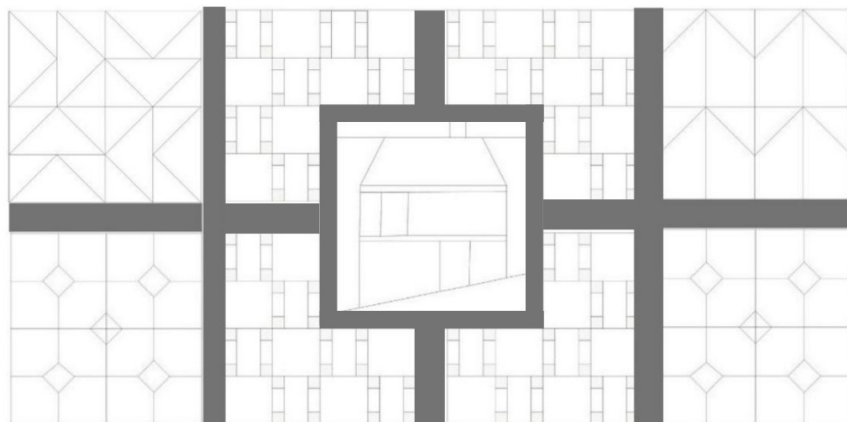
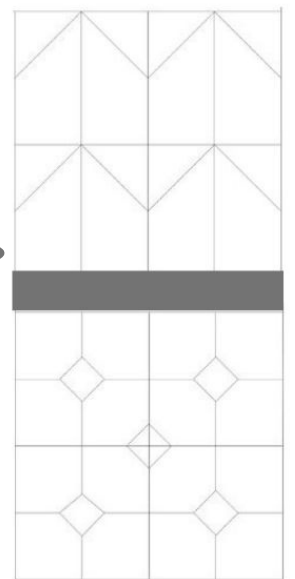
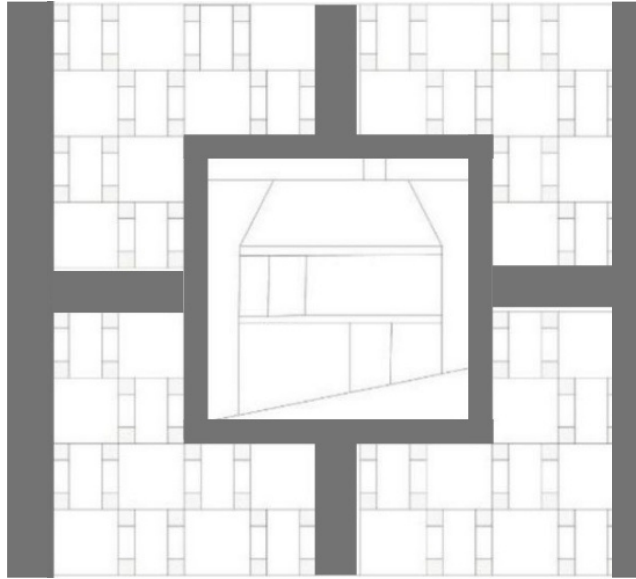
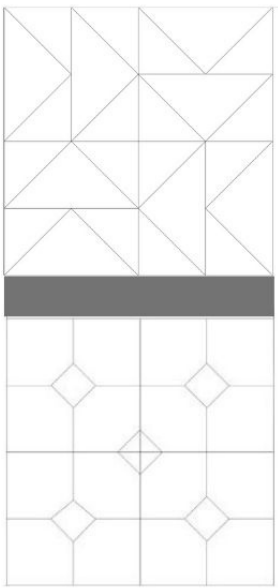
Attach upper and lower poaitibity panel to house center.

Cut (2) 2.5" x 26.5" strips of sashing and sew to sides of center house square

MIDDLE PANEL



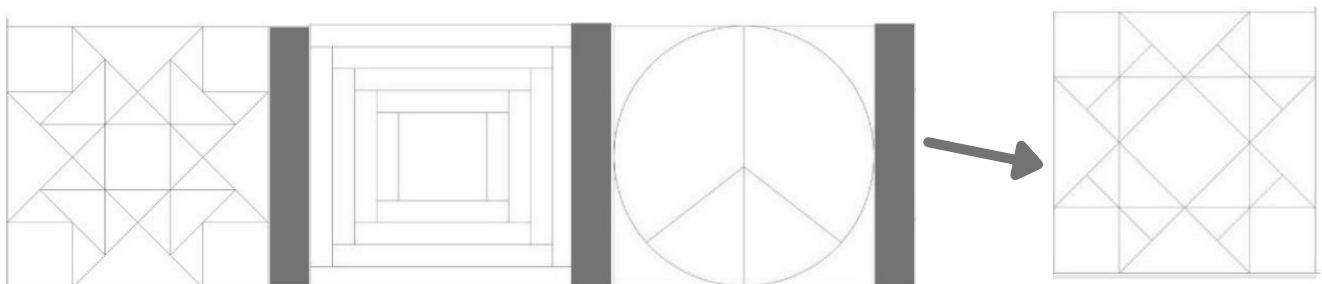
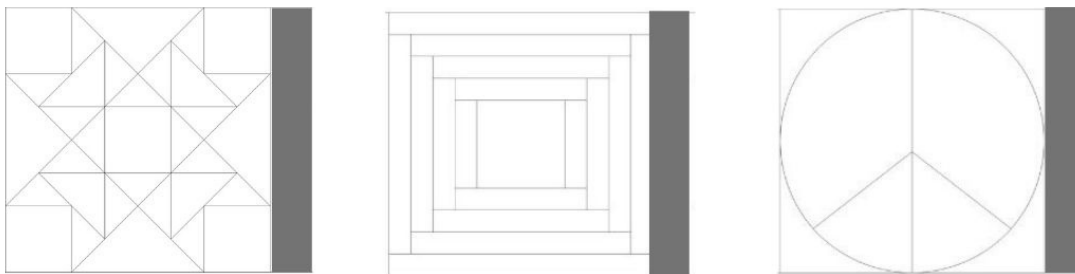
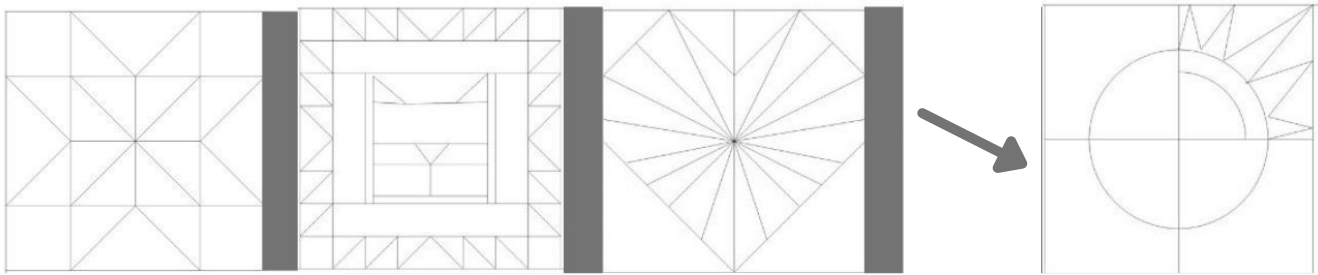
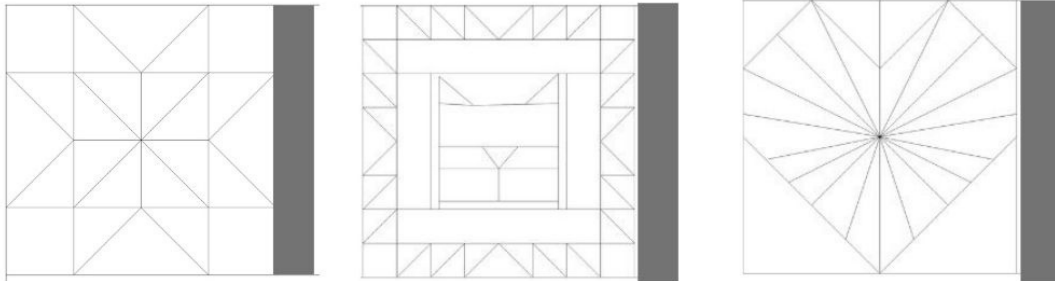
Cut (2) 2.5" x 12.5" strips of sashing and sew to side blocks as shown



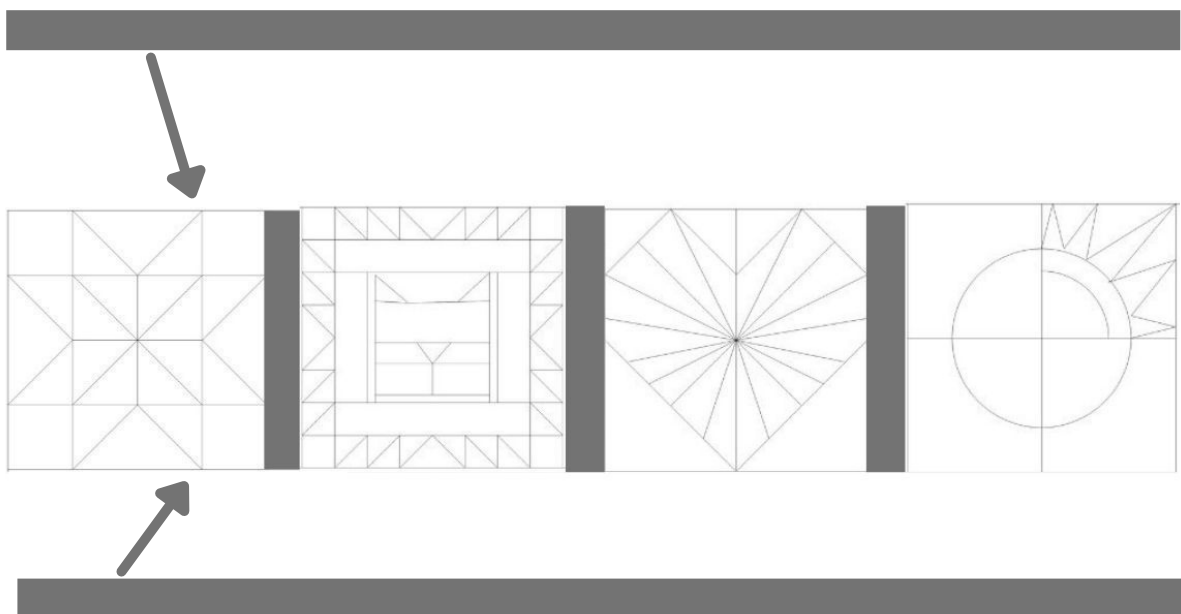
SASHING TOP & BOTTOM ROWS

Cut (6) 2.5" x 12.5" strips of sashing and sew to the right side of blocks as shown

- sew those blocks together
- add the end block on the top row
- add the end block on the bottom row

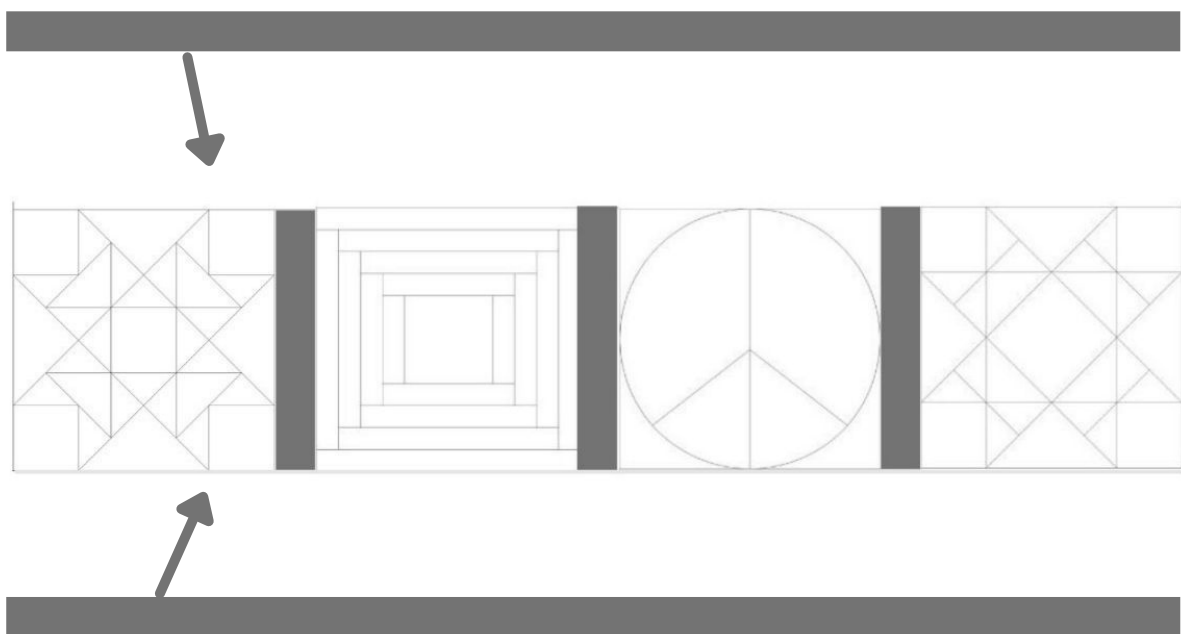


SASHING TOP & BOTTOM ROWS CONTINUED

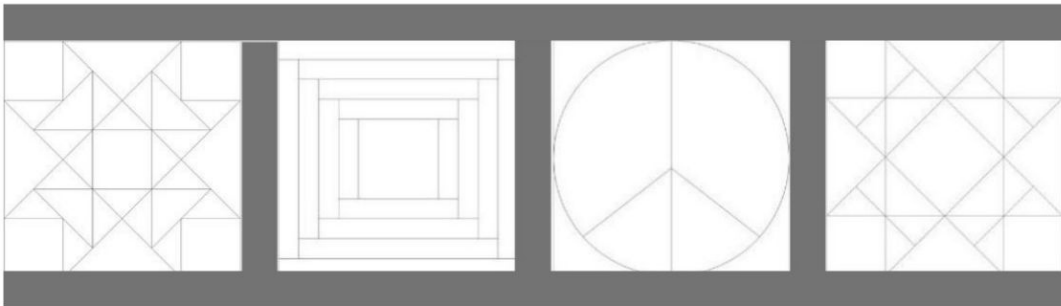
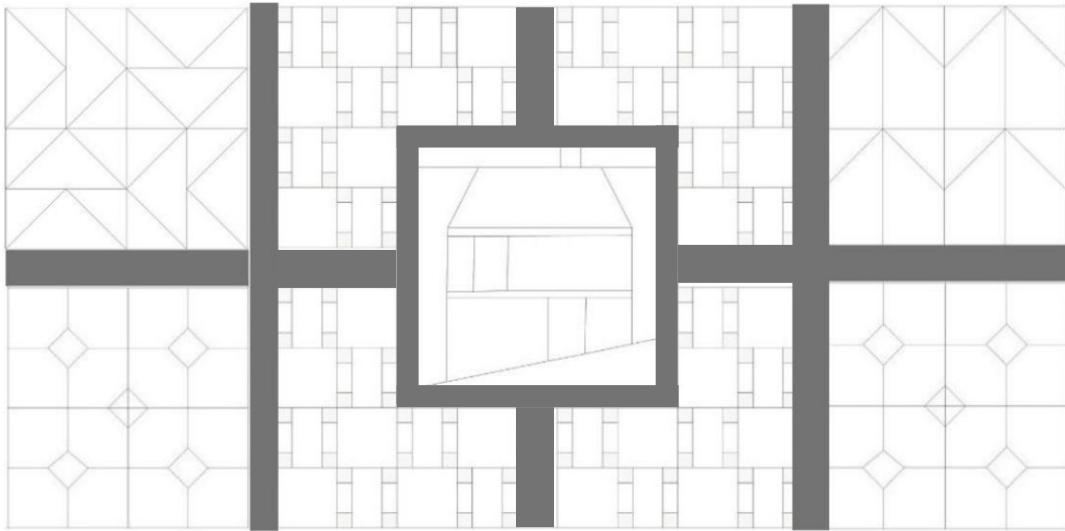
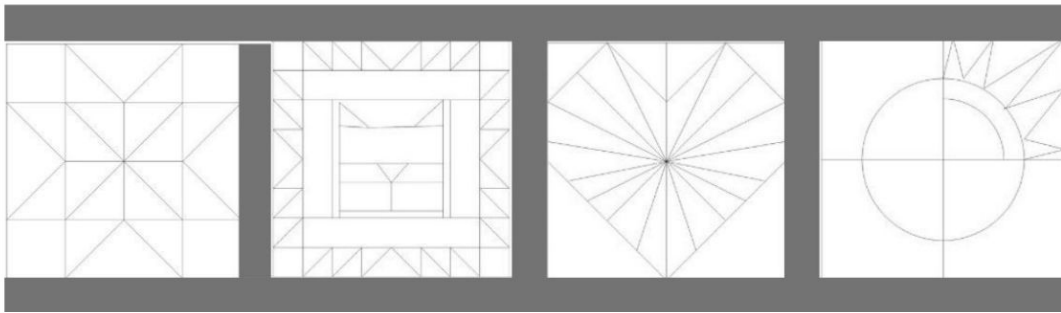


Cut (4) 2.5" x 54.5" strips of sashing

- sew to the top and bottom of the top row
- repeat on bottom row as shown

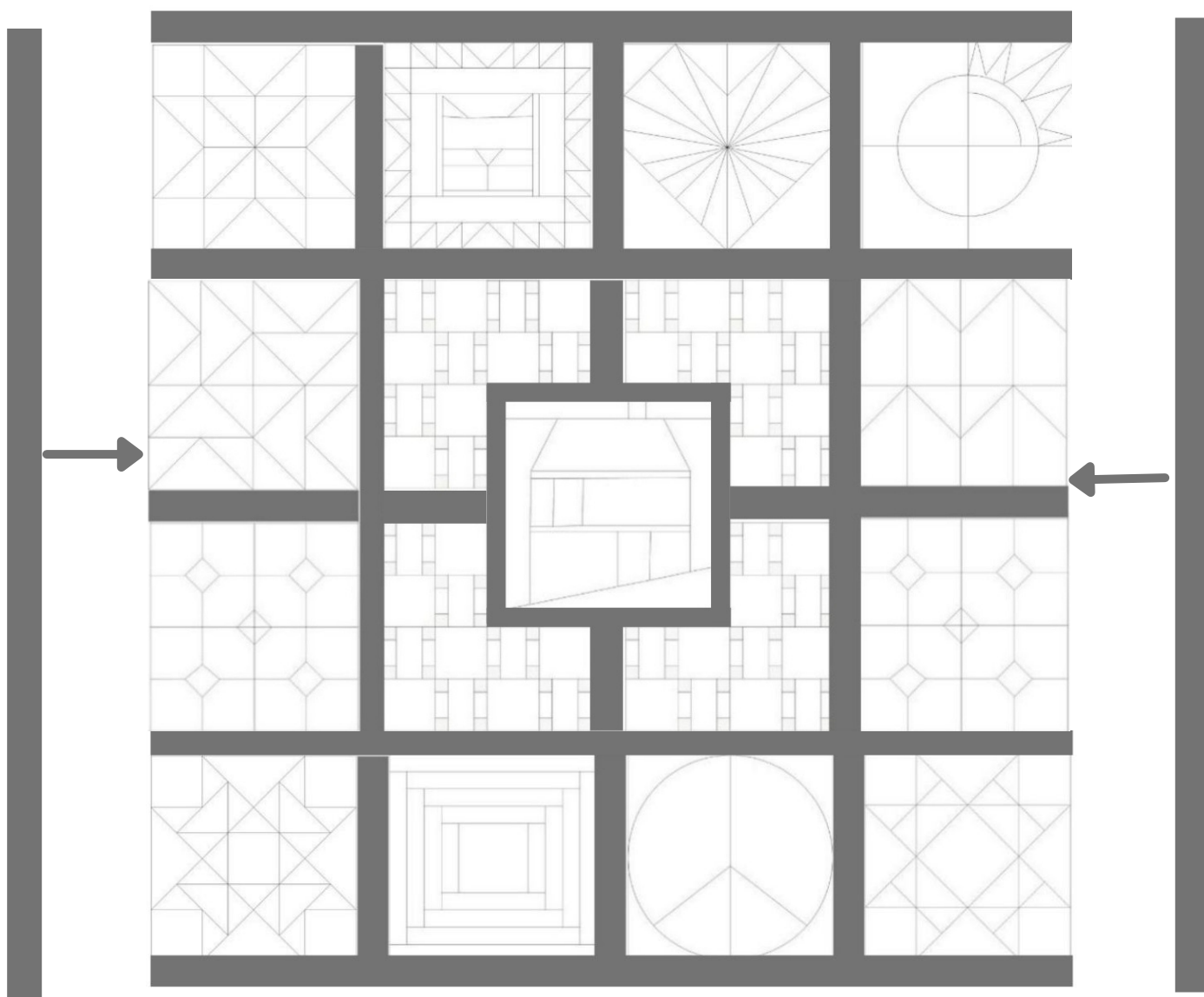


SASHAY AWAY



- Attach top and bottom rows to the center as shown.

SASHAY AWAY



Cut (2) 2.5" x 58.5" strips of outer sashing

- sew to each side of the quilt, press, and admire!

QUILT AND BIND

Backing Required:

Domestic Machine: 66" x 66"

Longarm Machine: 70" x 70"

Batting Required: Approximately 65" x 65"

Binding Fabric Required: Approximately .5 yards